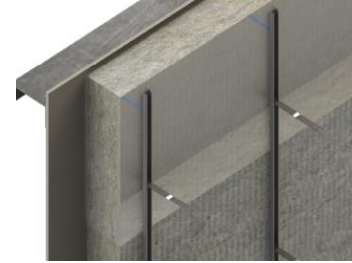


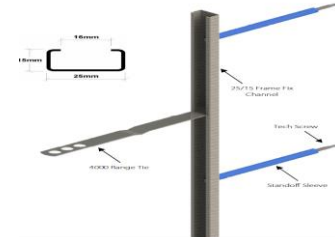
## R-ACS-55/63 Bi-Metal Self-Drill Screws A2-304 No.5 Point (6.0mm) & S14 EPDM Washer

High performance corrosion resistant (ruspert finish), for effective protection



### Approvals & Reports

- ETA-13/0453
- AT-15-6435/2012



SAP CODE	DESCRIPTION	THREAD LENGTH	MIN. FIX THICKNESS	MAX. FIX THICKNESS	MAX. STEEL THICKNESS
R-ACS-55/63065S14	5.5/63 X 65MM HI-LO SELF-DRILL SCREWS A2-304 BI-METAL S14 EPDM WASHER	44.0MM +/- 2.0MM	25MM	47MM	6.0MM
R-ACS-55/63085S14	5.5/63 X 85MM HI-LO SELF-DRILL SCREWS A2-304 BI-METAL S14 EPDM WASHER	48.0MM +/- 2.0MM	40MM	67MM	6.0MM
R-ACS-55/63105S14	5.5/63 X 105MM HI-LO SELF-DRILL SCREWS A2-304 BI-METAL S14 EPDM WASHER	60.0MM +/- 2.0MM	50MM	87MM	6.0MM
R-ACS-55/63130S14	5.5/63 X 130MM HI-LO SELF-DRILL SCREWS A2-304 BI-METAL S14 EPDM WASHER	60.0MM +/- 2.0MM	75MM	112MM	6.0MM
R-ACS-55/63150S14	5.5/63 X 150MM HI-LO SELF-DRILL SCREWS A2-304 BI-METAL S14 EPDM WASHER	80.0MM +/- 2.0MM	95MM	132MM	6.0MM
R-ACS-55/63180S14	5.5/63 X 180MM HI-LO SELF-DRILL SCREWS A2-304 BI-METAL S14 EPDM WASHER	80.0MM +/- 2.0MM	105MM	162MM	6.0MM
R-ACS-55/63210S14	5.5/63 X 210MM HI-LO SELF-DRILL SCREWS A2-304 BI-METAL S14 EPDM WASHER	80.0MM +/- 2.0MM	135MM	192MM	6.0MM
R-ACS-55/63230S14	5.5/63 X 230MM HI-LO SELF-DRILL SCREWS A2-304 BI-METAL S14 EPDM WASHER	80.0MM +/- 2.0MM	155MM	212MM	6.0MM
R-ACS-55/63270S14	5.5/63 X 270MM HI-LO SELF-DRILL SCREWS A2-304 BI-METAL S14 EPDM WASHER	80.0MM +/- 2.0MM	195MM	252MM	6.0MM
R-ACS-55/63300S14	5.5/63 X 300MM HI-LO SELF-DRILL SCREWS A2-304 BI-METAL S14 EPDM WASHER	80.0MM +/- 2.0MM	225MM	282MM	6.0MM

## Product information

### Features and benefits

- Additional thread with larger pitch under the head protects against deformation of upper panel lining
- Waterproof tight connection
- Available with or without EPDM washer

### Applications

- Direct fastening of sandwich panels to structures made of thin-walled cold formed sections.

### Base materials

Approved for use in:

- Structural Steel
- Metal Sheet & Profiles

### Material

#### Fastener:

- Corrosion-proof steel grade 1.4301 (0H18N9) A2
- Drill: Hardened carbon steel, grade C17E2C (1.1147)

#### Washer:

- S14 - Stainless steel + EPDM

#### Drill Capacity:

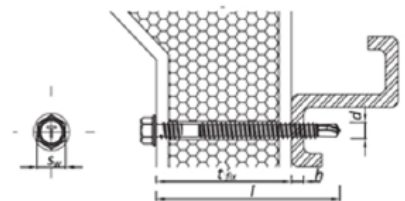
- Up to 6.0 mm

1. Screw must be installed at 90 degrees to substrate.
2. Special driver must be used.
3. Lowest torque setting on impact screwdriver to start.
4. Reduce speed when the washer starts to deform.
5. Use a cordless Impact screwdriver. Note: Never use a power drill.
6. For installation please use screwdriver of load capacity 1600 - 2000 rpm

DESIGN PERFORMANCE DATA Ø5.5/6.3 TENSION LOAD

Size	Ø5.5/6.3			
Substrate thickness	$h_{min}$ [mm]	1.50	2.50	4.00
Characteristic load	$N_{Rk}$ [kN]	1.06	2.99	5.44
Design resistance $\gamma_{M2} = 1.33$	$N_{Ed}$ [kN]	0.80	2.25	4.09

### MECHANICAL PROPERTIES



FASTENER SIZE			Ø 5.5/6.3
FASTENER DIAMETER	d	[mm]	5.5/6.3
HOLE DIAMETER IN THE SUBSTRATE	$d_s$	[mm]	—
MIN. DEPTH OF HOLE IN THE SUBSTRATE	$h_t$	[mm]	—
TOTAL FASTENER INSTALLATION DEPTH	$h_{min}$	[mm]	—
MIN. SUBSTRATE THICKNESS	$h_{min}$	[mm]	1.00
MIN. SPACING OF FASTENERS	$S_{min}$	[mm]	30
MIN. DISTANCE FROM EDGE	$C_{min}$	[mm]	10